

Nexx Adapter allows incompatible garage door opener work with Nexx Smart Garage Controller.

Compatible With Most Brands: Liftmaster®, Chamberlain®, Sears Craftsman®, Raynor®, Linear®, Genie Co®, Overhead Door Co®. and many more (see complete compatibility list on www.nexxhome.com)

WARNING:

This Adapter should not be used on residential door or garage door openers manufactured prior to 1994 or which do not utilize a secondary safety system such as photoelectric sensors.

To prevent possible SERIOUS INJURY or DEATH, always keep remote controls out of reach of children.

NEVER permit anyone to cross path while the gate or door is moving. ALWAYS keep gate or door in sight until the operations are completely terminated.

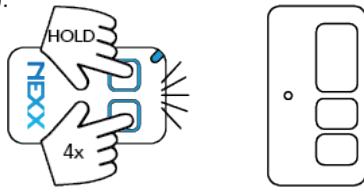
STANDARD PROGRAMMING PROCEDURE:

Note : "Source Remote" = The original or universal remote you currently use on the Door or Gate.

If the following procedure is carried out near the opener, the remote control will activate your garage door during programming. Ensure garage door is clear of ALL obstructions.

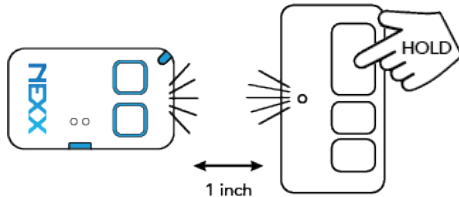
1. ACTIVATE CLONE MODE

While holding down the Button #1, press and release button #2 four(4) times. Then release both buttons, the Adapter should blink slowly (once every second).



2. CLONE CODE

Hold down the source remote's button until the LED light on the Adapter changes from a slow blink to a rapid blink.



3. SAVE CODE

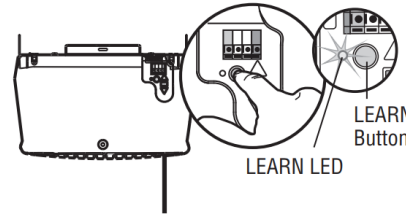
While the Adapter's LED is blinking rapidly, press and release button #1 on the Adapter one time. The Adapter's LED should light solid for few seconds and then go out.



4. LEARN ADAPTER'S CODE

From the back of your garage opener, locate the Teach/Learn/PRGM button (usually is behind the lens cover) on the unit. Press it for about 2 seconds but less than 4 (5 seconds or longer can delete the whole memory!). Then, from the Adapter, press and hold button #1 until the light on your opener blinks or operates. Programming is now complete. Now by pressing button #1 from the Adapter, your garage door opener should activate.

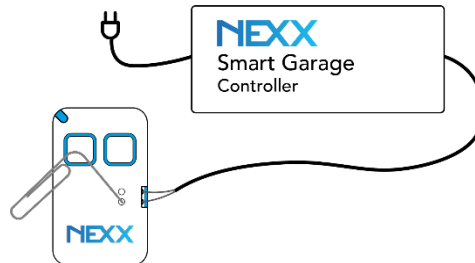
** If this did not work, check your garage door opener manual on how to program a new remote.



5. CONNECT NEXX ADAPTER

Insert one wire from Nexx Garage to each of the holes on the side of Nexx Adapter. The wires can be connected to either holes.

* To insert or release wires from the terminal, use paperclip or similar to push down the release mechanism at the front panel of Nexx Adapter.



TROUBLESHOOTING GUIDE

Adapter does not change to faster blink during programming

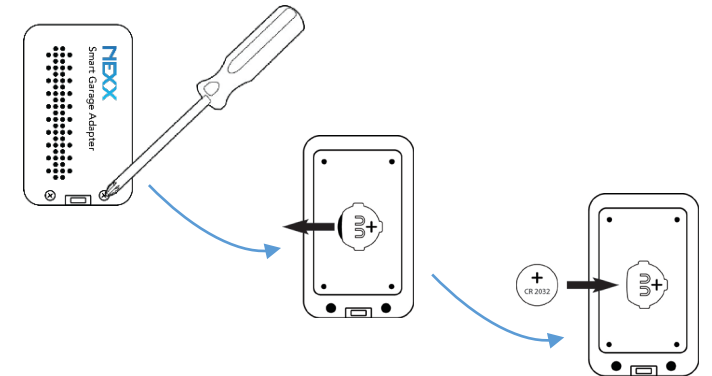
- Repeat the procedure positioning the remotes in a different way, closer or farther.
- Watch the tutorial videos online at getnexx.com/support
- Keep the remote and Adapter away from metal surfaces while programming.

BATTERY REPLACEMENT

The Adapter uses a 3 volt battery type **CR2032**.

Battery replacement does not affect the existing programs.

1. Unscrew the two screws at the back of Nexx Adapter and remove the back cover.
2. Slide out the battery. You can push it with a paper clip, or a flat head screw driver, or anything similar you have.
3. Slide in the new battery with the positive side facing up.
4. Reassemble.



SUPPORT

EMAIL: support@getnexx.com

WEBSITE: getnexx.com